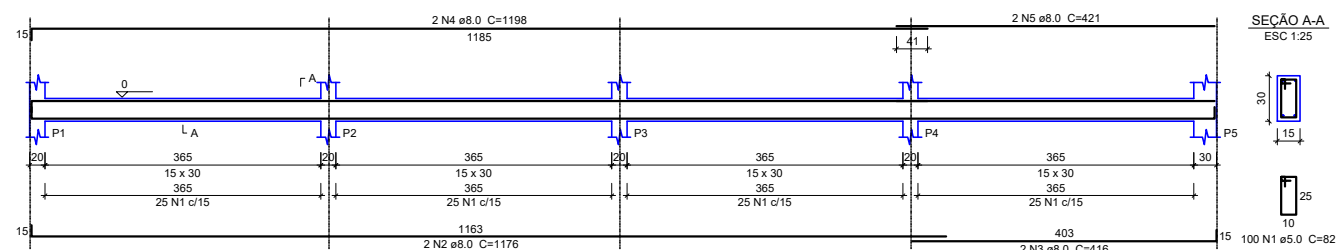
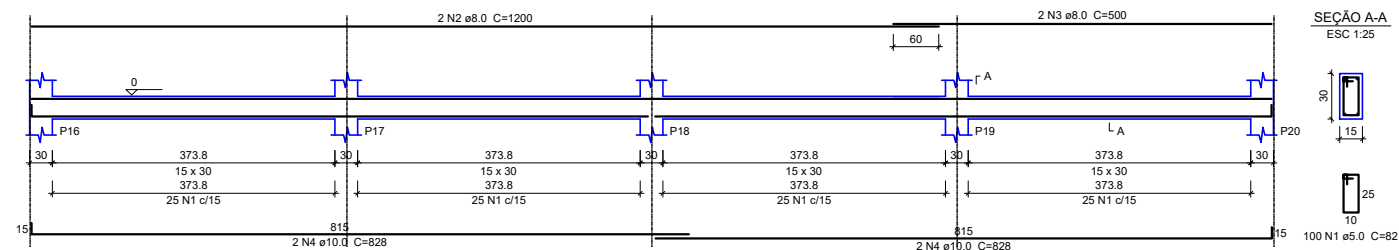


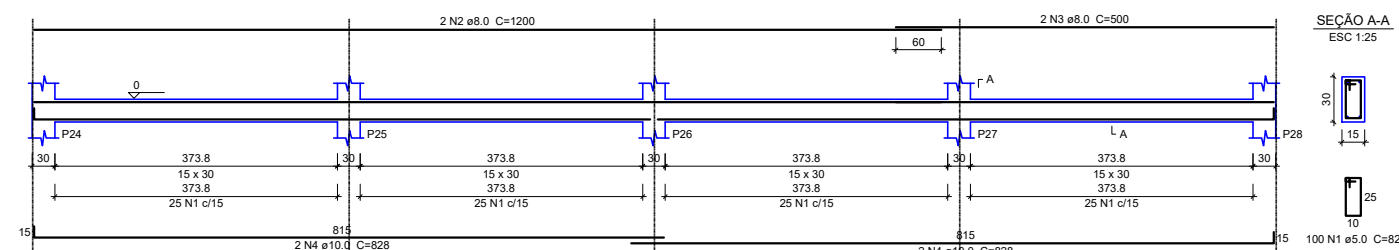
**VB1**  
ESC 1:50



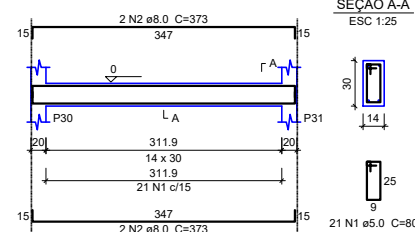
**VB4**  
ESC 1:50



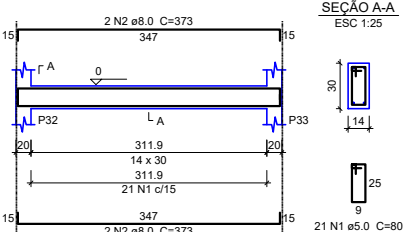
**VB5**  
ESC 1:50



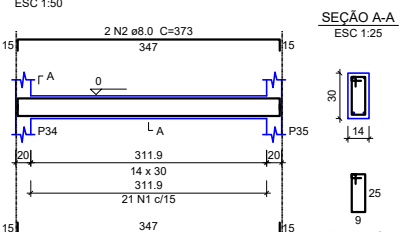
**VB6**  
ESC 1:50



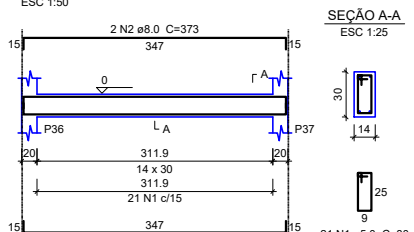
**VB7**  
ESC 1:50



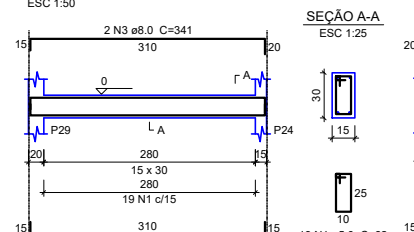
**VB8**  
ESC 1:50



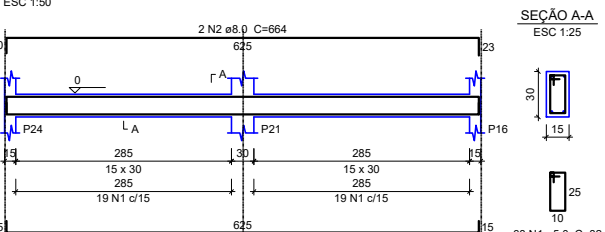
**VB9**  
ESC 1:50



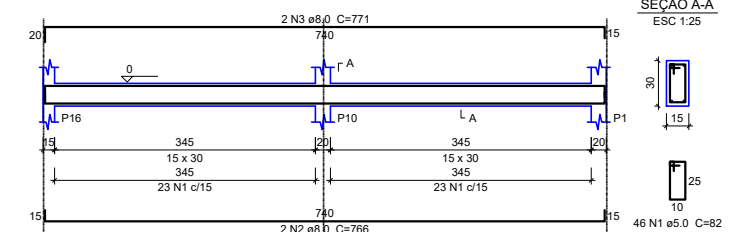
**VB10**  
ESC 1:50



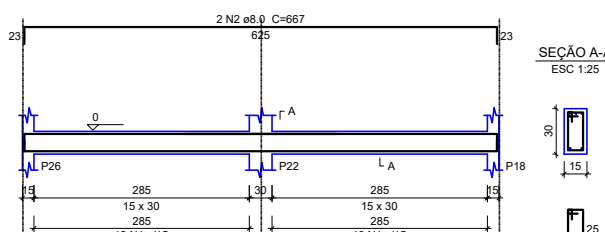
**VB11**  
ESC 1:50



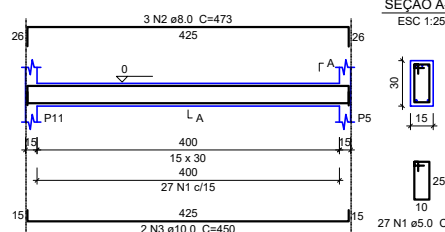
**VB12**  
ESC 1:50



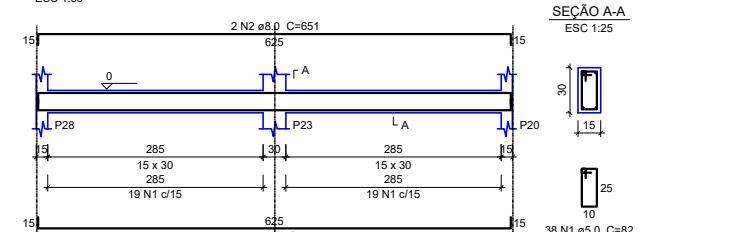
**VB13**  
ESC 1:50



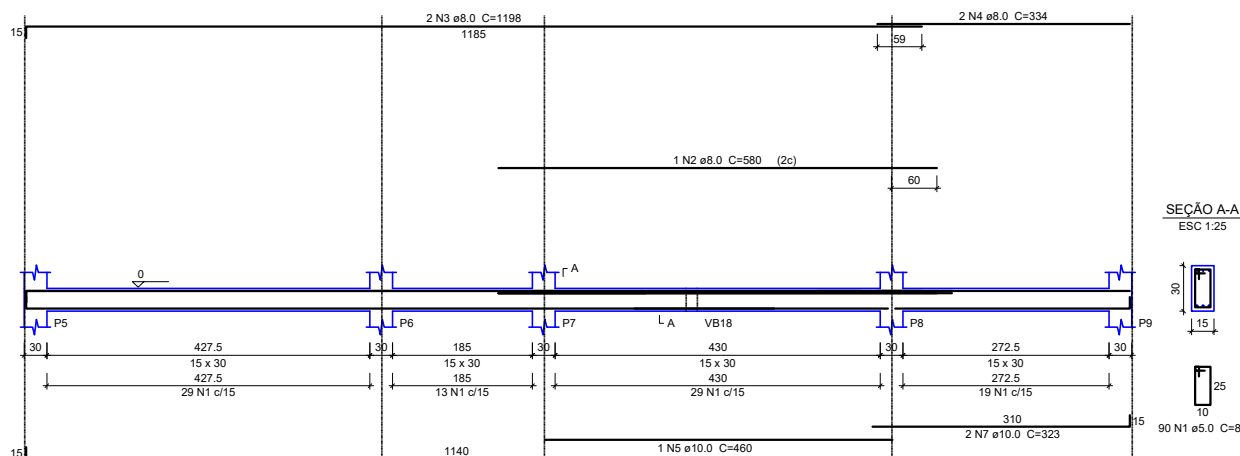
**VB14**  
ESC 1:50



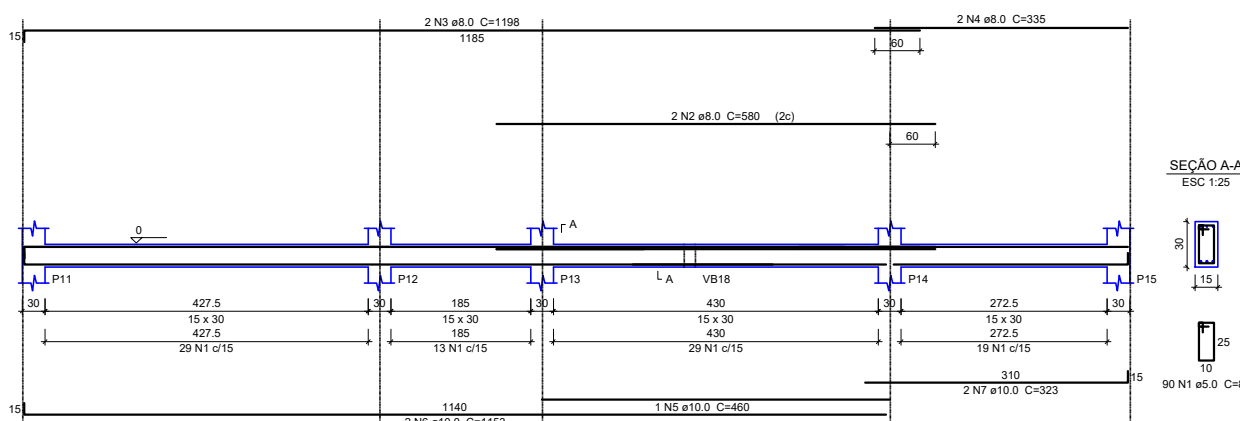
**VB15**  
ESC 1:50



**VB2**  
ESC 1:50



**VB3**  
ESC 1:50



## VIGA BALDRAME

ESC 1:200



PREFEITURA MUNICIPAL DE  
**VÁRZEA GRANDE**  
*Mais por Você. Mais por Várzea Grande.*

## PREFEITURA MUNICIPAL DE VÁRZEA GRANDE

Av. Castelo Branco, Espaço Municipal, 2500 - Centro Sul, Várzea Grande/MT CEP 78125-700 - Fone/Fax: 65 3688 8000

PROJETO:

PROJETO ESTRUTURAL

OBRA:

REFORMA E AMPLIAÇÃO

UNID. ESCOLAR:

EMEB "BENEDITO ABRÃO NASSARDEN"

LOCALIZAÇÃO:

RUA I, QD 12, S/Nº, BAIRRO FORMIGUEIRO - VG

AUTOR DO PROJETO:

MATHEUS MARCANZONI LEITE  
ENGENHEIRO CIVIL CREA-MT 042157

ESCALA:

INDICADA

DATA:

AGOSTO 2021

FOLHA Nº

02/14